



# Year 1 Booklet

# *Welcome to Year 1 at Prior Heath*

*The information in this booklet  
is provided so that we can work together  
to ensure a happy and fulfilling  
year for your child.*

2017/18

# The National Curriculum

All Year 1 children will study the following subjects:

English

Mathematics

Science

Art

Computing

Design Technology

Geography

History

Music

Personal, Social, Health & Citizenship Education

Physical Education

Religious Education

# English

## Reading

The children are encouraged to develop their reading skills using a core scheme and a variety of supplementary books. We hear them group read on a regular basis and also encourage them to read to each other and to other adults. We draw attention to non-fiction books so that they may begin to research their own topic work. The main object is to engage the children in books and develop a love of literature.



### *How can you help?*

The children will continue to take part in the home reading scheme, where they choose a book from a designated box. It is vital that all children, regardless of their book level, read aloud frequently at home either to develop their fluency or, equally importantly, to discuss meanings and attitudes portrayed in the stories. Please refer to the yellow prompt sheets stuck into your child's reading record every time they move onto a new book box. These outline the key aspects you can support your child on with their reading. Comprehension is vital to good reading skills. Encourage your child to make his or her OWN CHOICE from the box; this will help your child read for pleasure. Please record in the reading records when your child reads to you.

## Writing

We encourage the children to write freely whilst gradually introducing spelling structure and early punctuation rules. They will have a writing book which promotes a sense of authorship as well as giving them a real purpose for writing. The children will be sent home weekly spellings that link to either key words, topic or phonics work. The children are encouraged to learn words by using the LOOK, SAY, COVER, WRITE, CHECK procedure. This is one of the best ways of building a visual memory.

### *How can you help?*

Promote the use of pencils and paper. Encourage your child to make booklets, compile lists, label some drawings and write letters. This will help them to feel happy and free to put their ideas down onto paper. In addition, support your child in learning the weekly spelling word list.

## Phonics

Phonics (the learning of sounds) is taught on a daily basis. The children use these phonic skills to decode words to support their reading and spelling.

In June 2012 a phonics screening check was introduced nationally. All Year 1 children take part in this check where a selection of words has to be read out loud. Your child will take part in the screening check in June 2018.

### *How can you help?*

- Play “I spy”, using letter names as well as sounds.
- Continue to play with magnetic letters, using some of the two grapheme (letter) combinations:

**r-ai-n = rain** - blending for reading  
**rain = r-ai-n** - segmenting for spelling

**b-oa-t = boat** - blending for reading  
**boat = b-oa-t** - segmenting for spelling

**h-ur-t = hurt** - blending for reading  
**hurt = h-ur-t** - segmenting for spelling

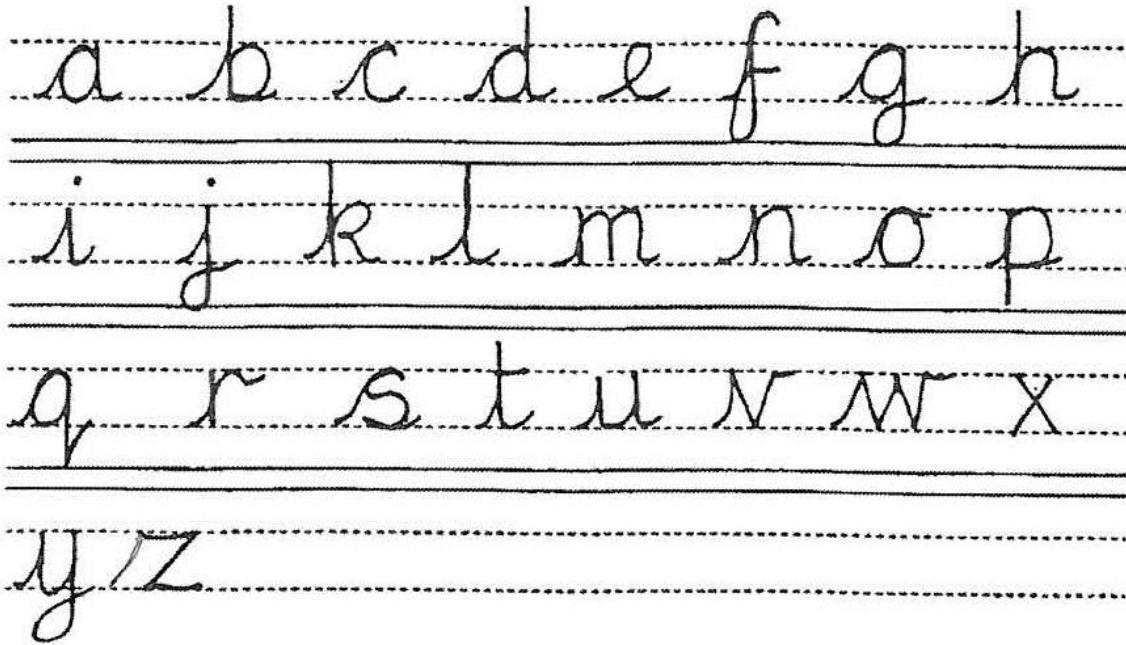
**Please see the school website for End of Year expectations for English.**



## Handwriting

Letter formation and handwriting are practiced regularly. We use a simple style, as follows:

### Lower case



### Upper case



### *How can you help?*

Ensure that your child holds the pencil correctly between the thumb and first fingers, resting on the middle finger and that the hand is relaxed. Use the script as detailed in this booklet for practice sessions, concentrating on any area of difficulty.

## **Speaking and Listening**

We place great importance on Speaking and Listening. It plays a vital part in the children's development of language. We encourage them to listen carefully and speak clearly, expressing their thoughts in whole phrases, in order that they may develop into good speakers and good listeners. We also provide opportunities for role play, drama activities and sharing a show and tell in class.

### ***How can you help?***

Give your child time to express their opinions clearly. Discuss home and school events using mature and appropriate language. Make time to talk to your child and for them to have talk time too.

## **Mathematics**

Our aim is to ensure that children have a sound understanding of mathematics and are confident in this subject. Areas of study include:

- ❖ counting and number relationships
- ❖ number facts
- ❖ calculations
- ❖ measures, shape and space

Children are encouraged to use their maths knowledge when approaching problem solving and investigation activities as well as using maths in every day contexts.

The teaching emphasis will be on mental calculation strategies and the use of these to solve problems. Children will use written recording alongside their practical and oral work to support their developing mental maths skills.

### ***How can you help?***

Find every opportunity to count, make comparisons and play games. This will encourage enjoyment of mathematical activities and help to build confidence, both vital steps to numeracy. Look for patterns, shapes and sets in everyday experiences at home and on journeys. Use real coins, play board games using dice. Please see the school website for the end of Year One expectations for mathematics.

# Science

The children will be introduced to scientific investigations and will look at a variety of life forms, different materials and how things like the seasons and weather can change. We will encourage them to look carefully and record their observations using writing and drawings.

## *How can you help?*

Encourage your child's natural curiosity and help them to make their own discoveries. Use non-fiction books to find out scientific facts.

# Computing

In Year 1 we build upon skills introduced in the Reception year. Whole class demonstrations are possible due to the school having an interactive whiteboard in each classroom and access to a computing suite. Over the year, computing work focuses on:

- ❖ Computer Science: understand what algorithms are and create simple programs such as following a route.
- ❖ Information Technology: use technology to create, organise, store, manipulate and retrieve digital content.
- ❖ Digitally Literate: recognise common uses of information technology beyond school and use technology safely and respectfully

In addition, children use listening stations and programmable toys to develop an understanding of computing and its place in society.





# History

History in Year 1 will introduce the children to the concept of the past and how life at home and school has changed by studying our school history, life in Victorian times and the lives of famous people.

## ***How can you help?***

Talk about your own and your parents'/grandparents' lives. This will give your child the feeling of being an important part of a time line that is continuous yet changing. Help your child to value the past and prepare for the future. Point out and discuss historical features on family outings.

# Geography

Initially, we encourage the children to develop a sense of place, using the immediate environment. Gradually, we begin to look at the wider environment outside the school. We introduce the children to simple geographical terms and begin to use simple globes and maps.

## ***How can you help?***

On family outings and holidays, share and discuss maps, sights, photographs and souvenirs with your child. Use geographical terms, e.g. valley, shore, hill, mountain. Discuss weather patterns and changing seasons.

# Design Technology

We provide opportunities to plan, construct and evaluate various products. Your child will be introduced to different tools and materials with emphasis on their safe use.

## ***How can you help?***

Encourage your child to make things, model making, appropriate construction kits, e.g. Lego, on their own and with siblings or adults. Help them to think about and explore possibilities and understand the benefit of making mistakes.

## Art

The use of various materials and methods will enrich your child's artistic experiences. The children will be encouraged to evaluate and appreciate their own, their contemporaries' and 'real' artists' work.

### *How can you help?*

Provide materials and opportunities for drawing and painting. Discuss and appreciate the results. Bring to your child's attention work by famous artists.

**Your child will need a named art apron with a loop so it can hang up on their peg.**

## Music

The children will participate in singing activities and play percussion instruments including melodies on glockenspiel. They will develop rhythmic skills and learn to appreciate music across a variety of genres.

### *How can you help?*

Provide opportunities to listen carefully and appreciate different types of music. Make singing an everyday activity at home.



## Physical Education

Your child will experience movement, dance, apparatus work and games to form the basis for healthy growth through exercise. Safety considerations are taught and working together cooperatively is encouraged. Supervised activity takes place on the adventure playground on a rota basis, weather permitting. Children will need a T-shirt, shorts and plimsolls, in a PE bag. **All items of clothing and the bag should be named please.**

### ***How can you help?***

- Ball skills, safe play and coordination activities can be practiced at home.
- Learning to dress independently is an important skill; please help your child to do this.
- Please check your child's plimsolls on a regular basis to ensure the size is correct.

For safety reasons, no jewellery may be worn during all PE activities. This includes earrings for pierced ears, which must be removed at home on these days. Long hair will need to be tied back.

## **Religious Education**

In Year 1, the children will be learning about Christianity and Judaism. They will also learn from religion by exploring, reflecting on, and responding to religious beliefs, values and experiences.

### ***How can you help?***

Help your child to know that the wide variety of religions all teach consideration for others and our world.

## **Personal, Social, Health & Citizenship Education**

In PSHCE, the children learn about themselves as developing individuals and as members of their community, building on their own previous experiences. They learn the basic rules and skills for keeping themselves healthy and safe and for behaving well. PSHCE provides opportunities for children to develop knowledge, skills, attitudes and behaviour which will enable them to become successful learners and effective citizens both within and beyond school.

# Home Learning Expectations

Home Learning should provide opportunities for partnership between home and school. Its purpose is to enhance a child's learning. The tasks set should not intrude unreasonably into the interests of the children beyond the school day.

When setting a home learning task it is important that:

- The home learning is purposeful and of value to the children.
- It matches the children's ability.
- The home learning set shows evidence of becoming progressively more demanding as the children move through the school.
- There is continuity between teachers who teach similar year groups.

In Year 1, the expectations are:

Reading: 10-15 minutes per night

Spelling: Weekly spellings are sent home on a Look, Cover, Write Check spelling sheet (5 minutes per day)

Maths: Each term a "Maths activities for home" sheet is sent home detailing the key learning for the term and possible activities for children to do at home.

The current maths focus in class work is identified in the weekly parent letter sent home on Fridays.

## Approaches to Teaching and Learning

Our aim is to encourage independence in learning which will help the children to gain confidence in their own abilities and skills. Most aspects of the curriculum are taught as single subjects; occasionally subjects are integrated in a cross-curricular approach. We use a mixture of teaching strategies. We may work with the whole class, in groups or individually. The children also use the outdoor area regularly to support all areas of the curriculum.

A weekly outline will be sent home with your child giving you an overview of the week. Information about the Year 1 curriculum can also be found in the Curriculum section of the school website: <http://priorheathinfant.co.uk/curriculum/year-1/>

## **Assessment**

Children's work is kept in school for monitoring and assessment purposes and you will have the opportunity to view it and discuss progress at Open Evenings during the year. We will contact you if we feel there is any cause for concern at any time. If you are worried about your child's progress, please make an appointment with your child's class teacher to discuss it as soon as possible. Our aim is to provide an atmosphere of mutual cooperation which is of benefit to your child and makes for an easy transfer to Year 2.

Please note the teacher has very little time in the mornings to talk about concerns. Please make arrangements to see the teacher at the end of the day.

## **School Lunches**

The Government currently funds free school lunches for all children in Reception, Year 1 and Year 2. School meals are freshly prepared and cooked on-site by Commercial Services, part of Surrey County Council. There are three choices of meal every day: a main (usually meat) option, a vegetarian option or a jacket potato. The children choose their meal at morning registration and are given a corresponding coloured band which they exchange for their meal at lunchtime. Therapeutic and religious dietary requirements are supported and considered on completion of a special diets request form which is available from the school office.

We encourage the children to try a little of everything, but they are not made to eat any food that they do not like. We expect them to use their cutlery correctly and to remember table manners. We try to make lunchtime a quiet and civilised social occasion.

We hope that the majority of parents will take up the option of a free school meal for their child. If you would like to discuss this further or you wish to send your child to school with a packed lunch, please contact the office.

## **Snacks & Milk**

Children are encouraged to bring in a named bottle of water to drink throughout the day. The school provides children with a healthy snack (e.g. fruit and vegetables) each day.

We have a school milk scheme which is run by Cool Milk. Milk is completely free for all children aged under five and for some children who receive pupil premium funding. It is subsidised for children aged five or older at around £15 per term. If you would like your child to receive a carton of semi-skimmed milk every day, simply register at [www.coolmilk.com](http://www.coolmilk.com) or complete a registration form available from the school office.

## **Help**

We hope that the information we have given you will be helpful. There are several ways in which you can help, and we would be so grateful for support in these areas:

1. As you know, the school day begins at 8.50am. The classroom doors are opened at 8.40am and registration is at 8.50am when the outside doors are locked for security reasons. If your child arrives after 8.50am, please report to the school office to ensure your child is included in registration and lunch numbers. Please note there is no supervision before 8.40am. Lateness has an effect on children's learning. If a child is late they may miss a crucial introduction to a session which could significantly impact on their learning. In order to help children make the best start to the day they need to be in school by 8.50am.
2. Money needs to be placed in a named envelope as office staff deal with many administrative items. If there is no envelope, we need to find one and write the information on the front.
3. **Please name all clothes**, including hats and gloves in winter time. It saves our time and your child's.

## Growing Up!

In Year 1 our aim is to encourage the children to gain confidence and independence.

One of the ways to help your child is to let them walk into the classroom on their own. They can say their goodbyes to you in the playground and then take that 'big step' of coming in without you! They will also like leaving the class on their own and meeting you in the playground at the end of the school day.

Would you please inform the class teacher of normal going home arrangements by letter at the beginning of the year. **If you need to change your normal collection arrangements, please notify the class teacher by letter.**

## Please remember

- Named PE kits.
- Named apron with loop.
- A letter to notify changes to the end of day collection arrangements.
- School bag and yellow reading record to be in school every day.
- A named water bottle.

# Home School Agreement

We would like to take this opportunity to remind parents of our Home School Agreement:

## **The School**

### **We will:**

- Provide a high quality learning environment in which all pupils are cared for and valued.
- Provide a broad and balanced curriculum for all children within the guidelines of the EYFS and National Curriculum.
- Maintain high standards of behaviour, encouraging sensitivity for others and respect for all.
- Ensure the safeguarding and welfare of all children.
- Keep you informed about general school matters and your child's progress.
- Offer opportunities for you to support the life of the school.
- Inform you about any concerns or problems that affect your child's work or behaviour.
- Contact you in an emergency using given contact details.
- Encourage children to do their best at all times.
- Encourage children to take care of their surroundings and others around them.

## **Parents/Carers**

### **We will:**

- Ensure that our child goes to school regularly and punctually and inform the school promptly when our child is sick.
- Inform the school of any concerns or problems that might affect our child's work or behaviour.



- Support the school's uniform policy by dressing our child in the agreed school uniform.
- Make sure our child arrives for school before 8.50 am and is collected promptly at the end of the school day at 2.50 pm.
- Ensure our child is not taken out of school for holidays during term time.
- Attend parents' evenings and discussions about our child's progress.
- Support the school's policies and guidelines on behaviour.
- Support all opportunities for home learning.
- Name all items of school clothing and equipment.
- Provide the school with emergency contacts and keep them updated.

**We will encourage our child to:**

- Be friendly, helpful and truthful.
- Be kind to everyone.
- Take care of their school and everything that belongs to it.
- Always try their best.

